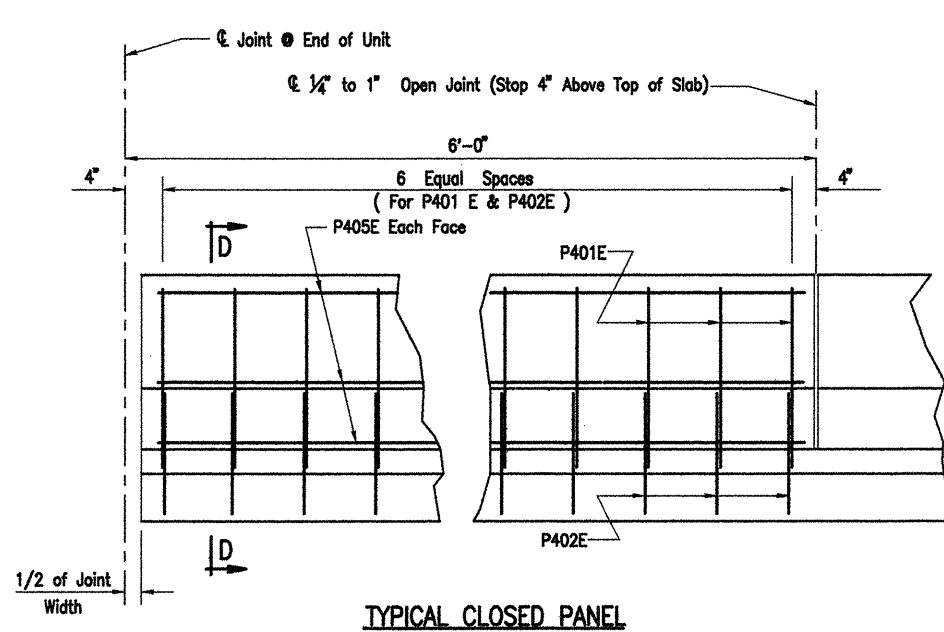
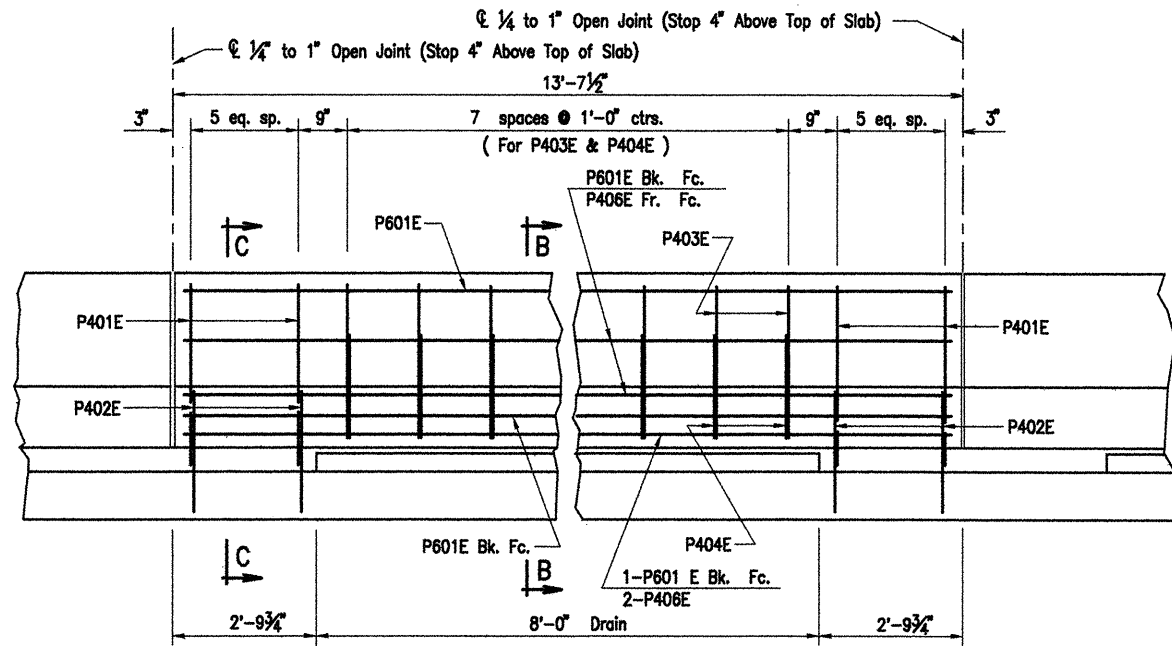


COMPANY 1999 JOBS 99-044 AHTD WHITERIVER JOB 110394\363parapet\1 ACAD SCALE: 6"=1'-0"

DATE REVISED	DATE FILMED	DATE REVISED	DATE FILMED	FED. ROAD NO.	STATE	FED. AID PROJ. NO.	SHEET NO.	TOTAL SHEETS
					ARK.			
				JOB NO.		110394	86	196
				06830		363' UNIT		41998



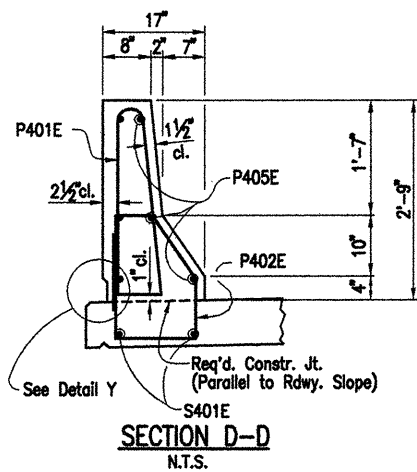
TYPICAL CLOSED PANEL



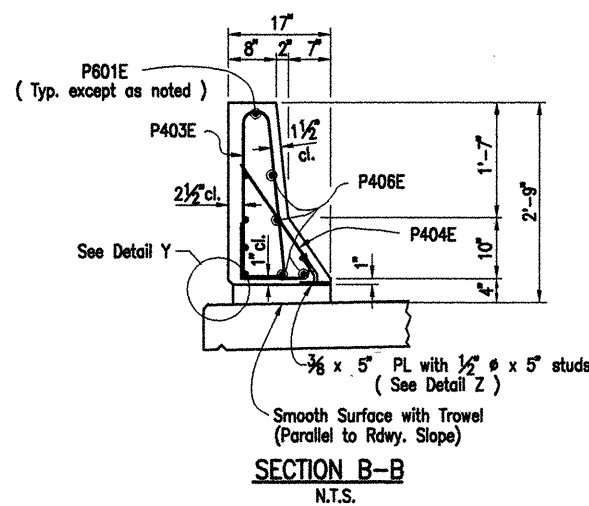
TYPICAL OPEN PANEL

ELEVATION OF TYPICAL PARAPET RAIL

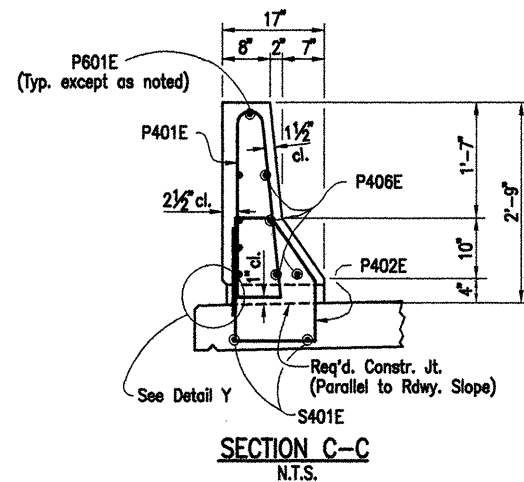
(As viewed from roadway side of parapet)
N.T.S.



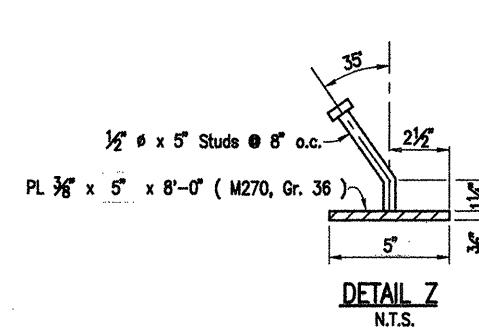
SECTION D-D
N.T.S.



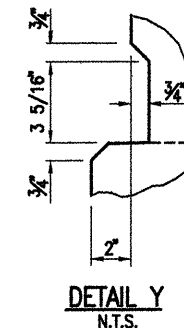
SECTION B-B
N.T.S.



SECTION C-C
N.T.S.

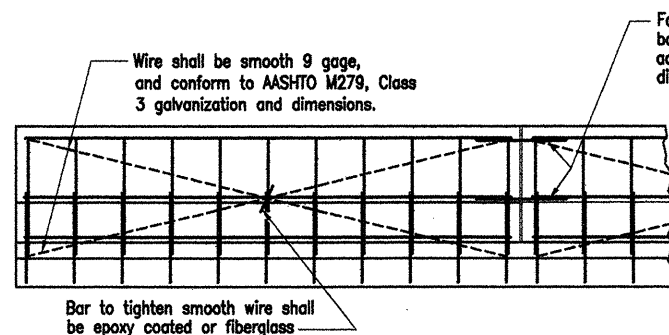


DETAIL Z
N.T.S.



DETAIL Y
N.T.S.

Note:
The surfaces of the 3/8" Plates which will not be in contact with concrete shall be painted with aluminum epoxy paint in accordance with Section 638 or as approved by the Engineer. Only one coat is required and shall be applied in the fabricator's shop. Painting will not be paid for directly, but will be considered subsidiary to Structural Steel or Class S (AE) Concrete.



DETAILS OF OPTIONAL SLIPFORMING OF CONCRETE PARAPET RAIL (OPEN OR CLOSED)

N.T.S.

All smooth wire bracing shall be placed on the inside faces of the reinforcing

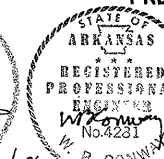
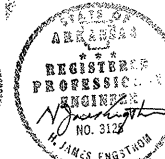
The extruded parapet shall conform to the horizontal and vertical lines shown on the plans or as directed by the Engineer and shall present a smooth, uniform appearance and texture.

All panels shall be braced as shown to prevent racking. All open joints shall be sawed as soon as practical to a minimum width of 1/4". To control racking before sawing all joints must be grooved before the concrete is set. Sawing of the joints must be controlled so it will follow the grooved joint.

Wire shall be smooth 9 gage, and conform to AASHTO M279, Class 3 galvanization and dimensions.

Four #4 fiberglass reinforcing bars shall be installed as shown across all open joints with a 40 diameter lap on each steel bar.

Vertical reinforcing shall be closed loop on top



ALTERNATE NO. 1
WHITE RIVER BRIDGE APPROACHES
DETAILS OF 363'-0" CONT.
PRESTRESSED CONCRETE GIRDER UNITS
(SHEET 5 OF 7)

WHITE RIVER STR. & APPRS.
(CLARENDON) (PH. II) (F)
MONROE COUNTY

ROUTE 79 SEC. 13

ARKANSAS STATE HIGHWAY COMMISSION

LITTLE ROCK, ARK.

Engstrom/Modjeski and Masters, Inc.

DRAWN BY: GPT DATE: Nov. 07 FILENAME: b11039411_s05
CHECKED BY: YO DATE: Nov. 01 SCALE: 6" = 1'-0"
DESIGNED BY: GPT DATE: Nov. 01
BRIDGE NO. 06830 DRAWING NO. 41998